

UPCOMING GROUP SHOW

Up to 30 works on show
 October 2-15, 2009

Manitou Galleries
 123 West Palace Avenue
 Santa Fe, NM 87501
 (505) 986-0440

SHOW LOCATION SANTA FE, NM

LIZ WOLF AND ROBERT STRIFFOLINO

Expressions

Although sculptor **Liz Wolf** and painter **Robert Striffolino** tell stories in different mediums, both convey a depth and calmness in their work. The pair will present new works in a two-person show at Manitou Galleries beginning October 2. An artists' reception will be held from 5 to 7:30 p.m. in conjunction with the West Palace Arts District First Friday Artwalk.

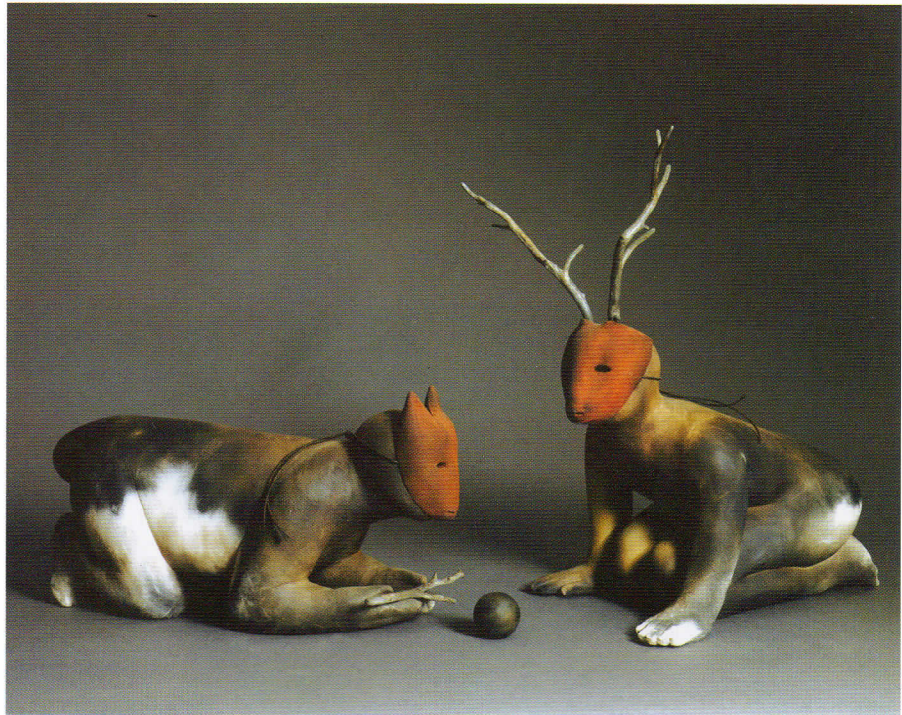
From an early age Liz Wolf knew that she was born an artist. As far back as she can remember art, beauty and the spirit world intertwined with her everyday life. As a sculptor she creates figurative and animal forms that tell a story.

"These forms all hold a spirit within them and all have a story to tell, a story that should be heard through one's eyes looking, rather than through the voice of a storyteller," says Wolf. "Today we have little time for mystery and spiritual quality in our lives. I want to keep the magic alive and living in my art. My artwork is an eclectic statement from visual and spiritual experiences from all that surrounds me."

Wolf works with a wide range of materials, including clay, mixed media and bronze. In her latest bronze titled *Dreamtime*, Wolf creates a woman sitting with a far off gaze that tells us she is traveling into a dream where the future lives.

"Here she has the ability to manifest her hopes and desires and bring them to fruition. We too have this ability. We need only to pay attention to our own dreams and desires," says Wolf.

Robert Striffolino's affinity toward nature continues to fuel his creative drive and he is motivated to express the spiritual/emotional essence of such things through paint and canvas. His



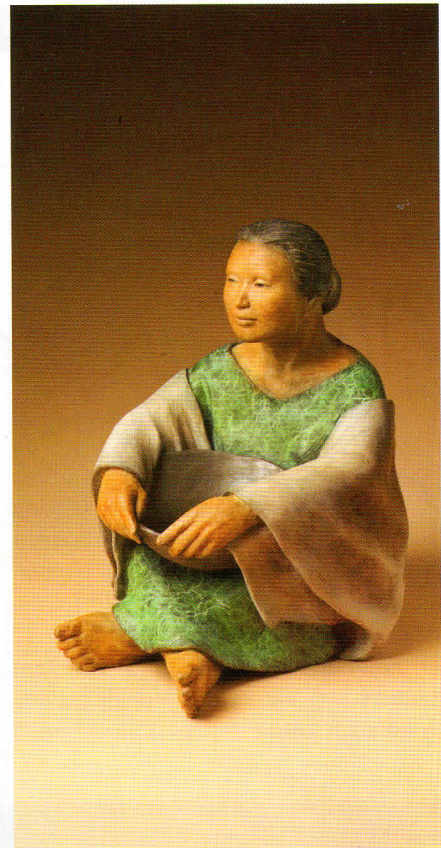
Liz Wolf, left, *Awakening*, raku, 13½ x 12 x 7½, right, *Dog Dreams*, raku, 6½ x 12½ x 5½"



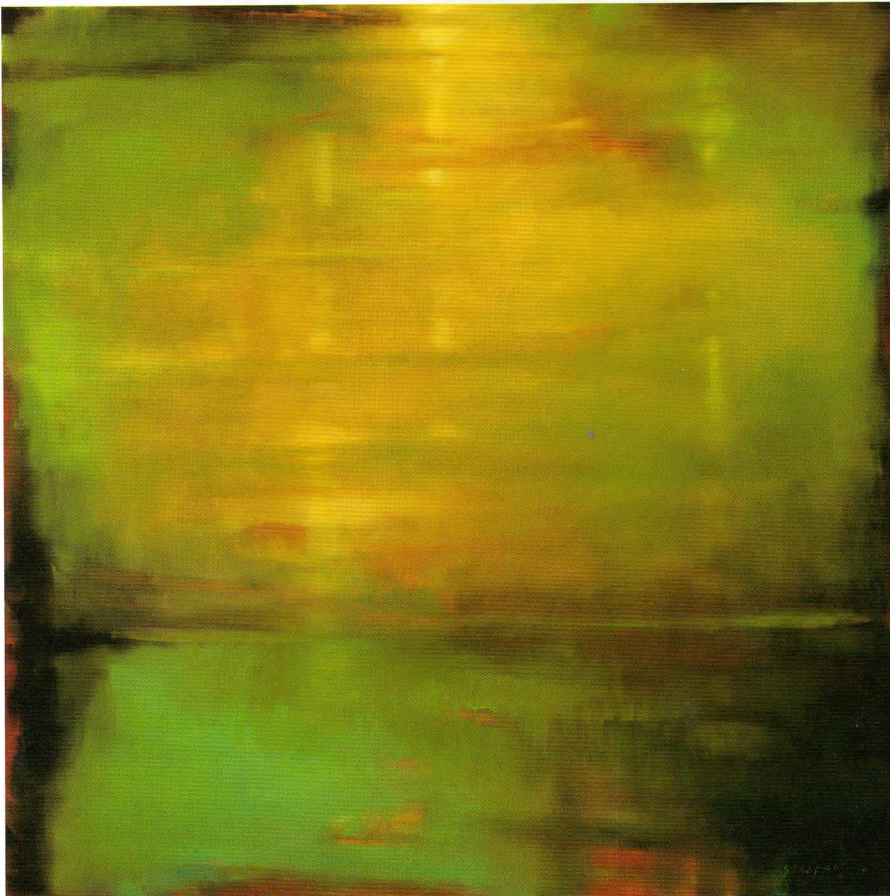
Liz Wolf, *The Gift*, clay for bronze in progress, 19 x 20 x 15"



Liz Wolf, *Listening*, bronze, 24 x 24 x 19"



Liz Wolf, *Dreamtime*, bronze, 15 x 11½ x 16"



Robert Striffolino, *Waterscape #13*, oil, 60 x 60"

Waterscape series came about because he wanted subject matter in nature that eliminated traditional foreground, middle ground and background.

"I was feeling constrained by that organization. I wanted to express my materials (paint and surface) in a stronger and more direct way," says Striffolino. "Finally it came to me that I might be able to do this with still water. It has allowed me to focus more on the formal elements of painting and not so much the literal subject matter."

For a direct link to the
exhibiting gallery go to



www.westernartcollector.com