

UPCOMING GROUP SHOW

Up to 50 works on show

May 2-16, 2008

Manitou Galleries

123 W. Palace Avenue

Santa Fe, NM 87501

(505) 986-0440

• SHOW LOCATION SANTA FE, NM

Crossing Boundaries: eight artists in glass

Founded by glass artist Dale Chihuly in 1971, the Pilchuck Glass School has been a primary force in the evolution of glass as a means of artistic expression. A new group exhibition at the Manitou Galleries in Santa Fe, *Crossing Boundaries*, includes new blown and hot sculpted glass work by some of the school's best teachers, alumni and students.

This new exhibition includes works by **Hib Sabin**, **Kim Goldfarb**, **Randy Walker**, **Liz Wolf**, **Niko Dimitrijevic**, **Raven Skyriver**, **Ross Richmond** and **Kelly O'Dell**. According to gallery owner Kathrine Erickson, the amazing thing about these works is that they are all hot sculpted, meaning they are basically formed in the air.

Hib Sabin creates masks, spirit sticks, amulets, spirit bowls and boats, often incorporating creatures like wolves, owls, ravens, bears, coyotes and eagles. The pieces are finished in watercolor and acrylic and then steel wool and sandpaper are used to create an aged quality. Juniper and pinon woods are used most often as they are both native to New Mexico.

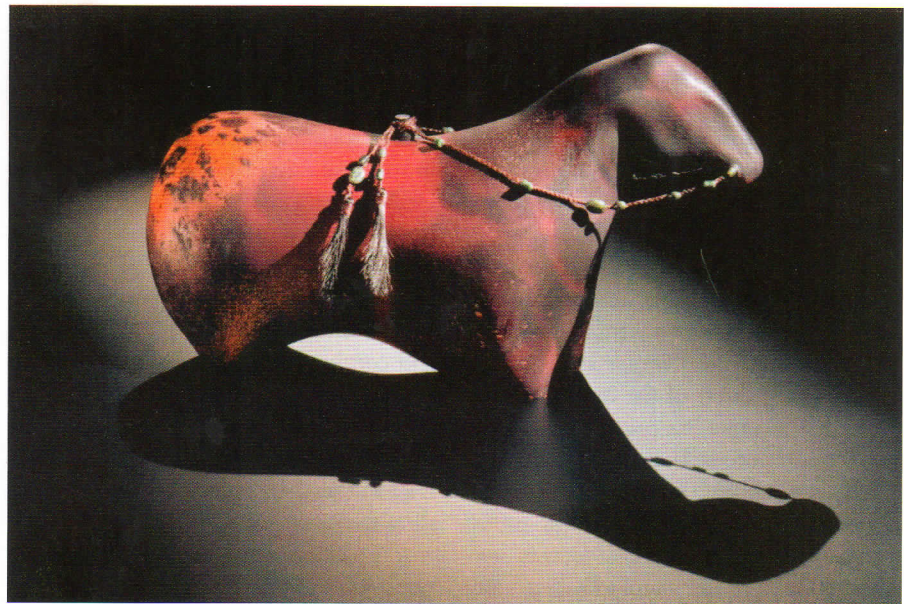
Kim Goldfarb gets her inspiration from the "tall tales" she often heard as a child while growing up near the Okefenokee Swamp in southern Georgia. Once in New Mexico, she discovered a passion for wood. This, combined with spirituality, myth, legend and wealth of natural materials in New Mexico, gave birth to her creative process.

Randy Walker has been a principal member of the William Morris blowing team for 16 years, helping to make some of the world's most innovative glass works. His pieces are inspired by nature's seasons.

"The stillness and solitude of the forest is a basic necessity for me," says Walker. "Life's seasons and cycles are played out with timeless patience. It's one place where the beauty of change, both death and birth, is celebrated equally.



STUDENTS AND FACULTY OF THE PILCHUCK GLASS SCHOOL IN WASHINGTON WITH MANITOU GALLERY OWNER KATHRINE ERICKSON, TOP SECOND FROM RIGHT.



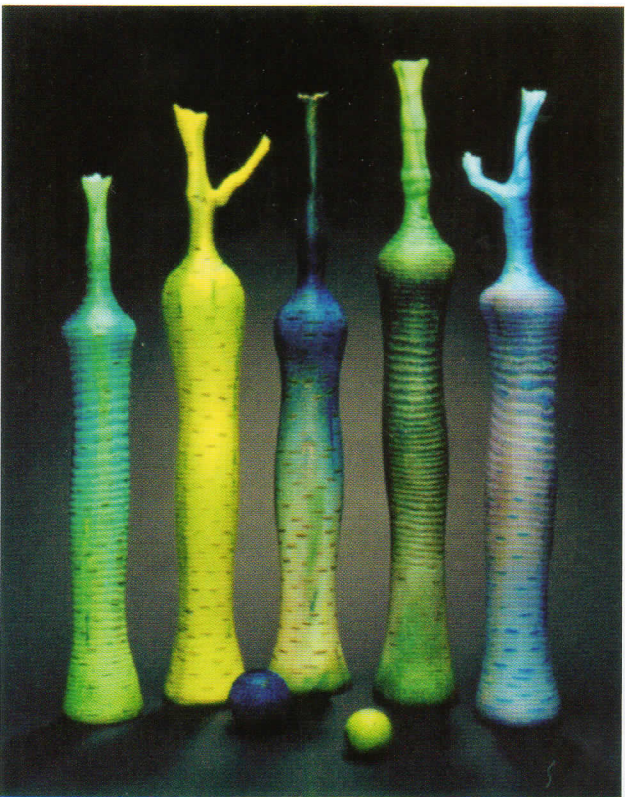
LIZ WOLF, HORSE FETISH #2, BLOWN AND HOT SCULPTED GLASS, 9½ x 15¾ x 6"



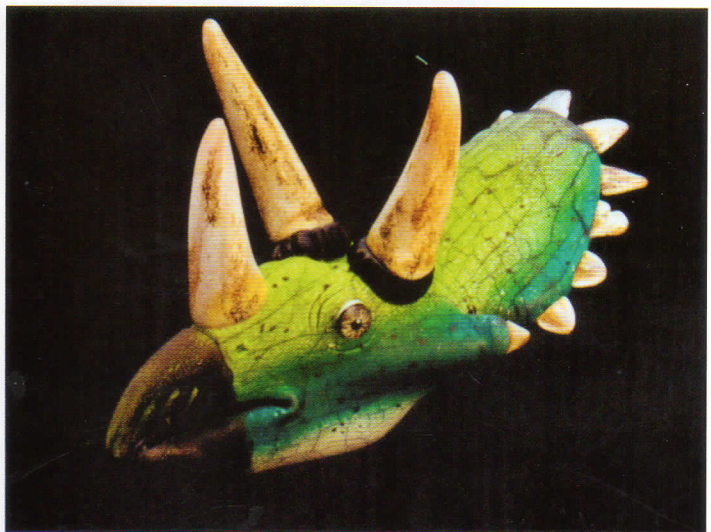
HIB SABIN, BARN OWL, BLOWN AND HOT SCULPTED GLASS,
19³/₄ x 6 x 9"



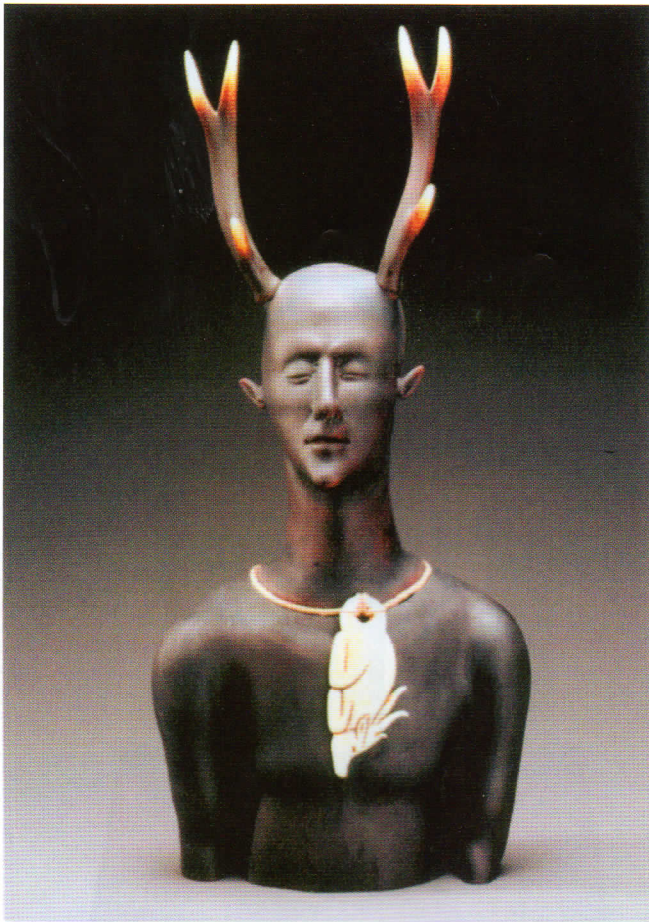
HIB SABIN, THE GUARDIANS, BLOWN AND HOT SCULPTED
GLASS, 26¹/₄ x 15 x 6¹/₂"



RANDY WALKER, SALT WATER BIRCHES, BLOWN AND HOT
SCULPTED GLASS, 7 PIECES, 31 x 5" EACH



KELLY O'DELL, 65 MILLION YEARS, BLOWN AND HOT SCULPTED GLASS,
18 x 9 x 10"



ROSS RICHMOND, SPIRIT GUIDE #19, BLOWN AND HOT SCULPTED GLASS, 26 X 11 X 7"



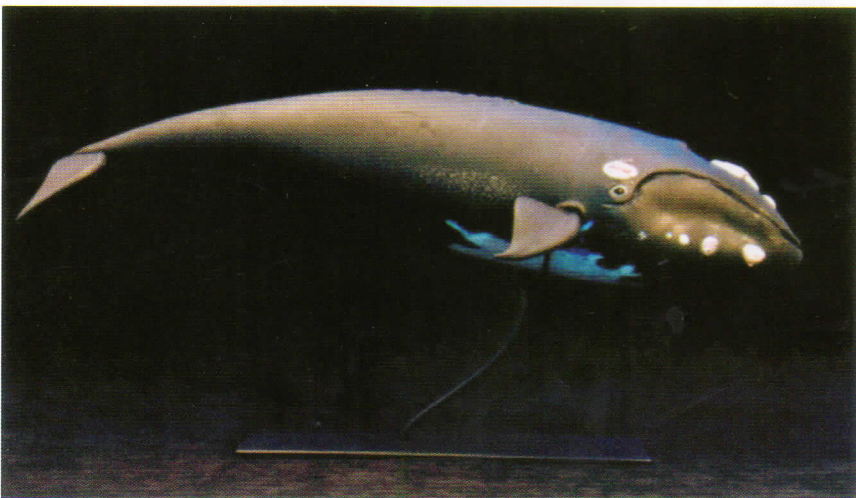
RANDY WALKER, BRAMBLES, BLOWN AND HOT SCULPTED GLASS, 5 PIECES, APPROXIMATELY 32 X 7" EACH



NIKO DIMITRIJEVIC, ONCE IS NONCE, GLASS, WOOD, METAL, 8 X 18"



KIM GOLDFARB, WILD AT HEART, BLOWN AND HOT SCULPTED GLASS, 20¾ X 16¾ X 9"



RAVEN SKYRIVER, NORTHERN RIGHT, BLOWN AND HOT SCULPTED GLASS, 32 X 12 X 15"

I want to capture this essence in my work."

Liz Wolf's glass sculptures are guardians. The sculptures are animal, human or a combination of the two upon which Wolf hopes to impose a spirit to protect the owner.

"The whole creative process is a mystery to me," says Wolf. "Creative energies are always around me, some more obvious than others. I am always aware of my surroundings, and I feel that I channel life into images through my artwork."

Niko Dimitrijevic is an emerging artist who attended Pilchuck as a student and teaching assistant and has worked for Randy Walker and Karen Willenbrink-Johnson. Dimitrijevic's exploration of material tends to involve narrative situations that serve as a bookmark within his life, both technically and conceptually.

Raven Skyriver draws his inspiration from nature. The challenge of realism is what makes working sculpturally so alluring to him.


"While my knowledge of glass continues to grow, I am learning more about what I wish to convey in my work," says Skyriver. "I enjoy creating things that make people laugh. I also enjoy making work that addresses the supply and demand for the food that we eat. I want my work to evoke thoughts about the importance of where our food comes from."

Ross Richmond has been working with glass for the past 17 years. His pieces are typically narrative, and he works mainly with figurative elements and symbolic objects.

"Much of my current work is influenced by man's relationship with nature as well as his impact upon nature," says Richmond. "I find faces and hands to be very beautiful and expressionistic, a source of silent communication, and I use gestures and titles to help convey an overall story."

Kelly O'Dell feels that the goal in all her blown design work is to create a visually alluring composition of color, light and mass. She chose the dinosaur as her subject to teach her more about sculpting glass. The dinosaurs she makes resemble important souvenirs of that which is gone but not forgotten.

"My pieces are typically narrative, working mainly with figurative elements and symbolic objects," says O'Dell. "Communication is an important aspect of our existence and has always been a main source of my inspiration, whether it be with oneself or between others." ●

For a direct link to the exhibiting gallery go to 

www.americanartcollector.com